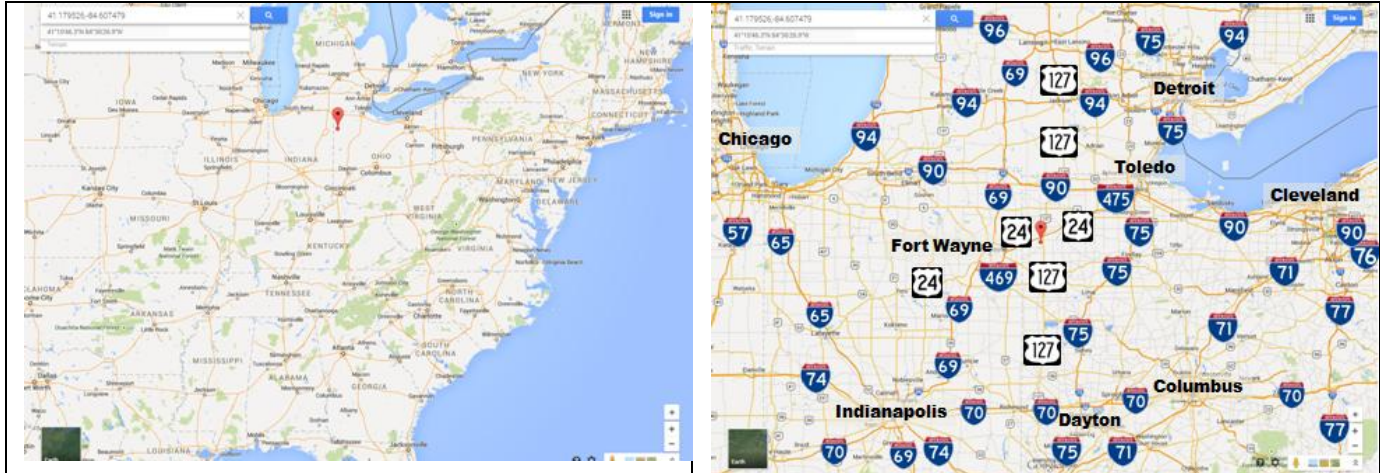


Systech Environmental Corp

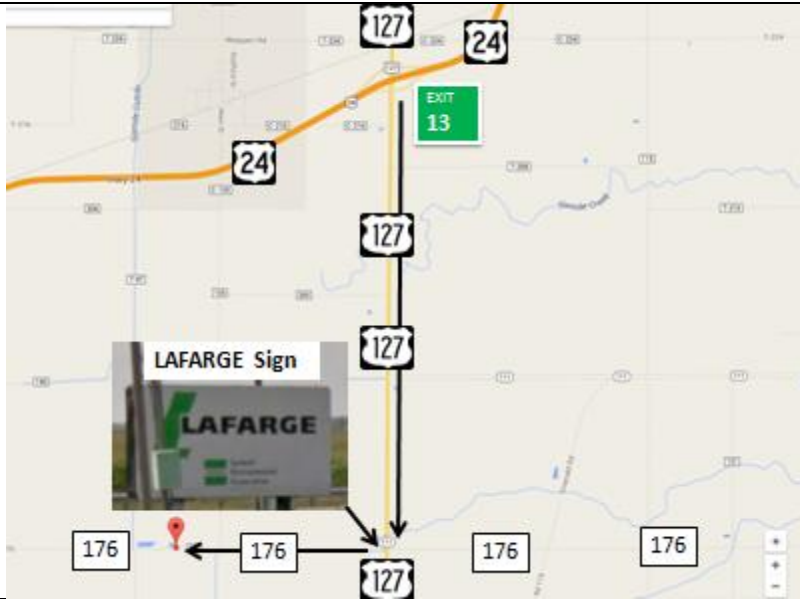
1139 Rt. 176

Paulding, OH 45879

41.179526,-84.607479



This facility is between Toledo OH and Fort Wayne IN. It is just south of Exit 13 on US-24 in Ohio. I haven't found a map that shows Exit 13 on US-24 so I'm providing a picture to show you what you will see when you get there.



From: Toledo, OH I-475 Exit 4 B				
	W	US-24	55.2	X 13
L			LAFARGE	
	S	US-127	2.7	Sign
R			Gate 4	
	W	Rd-176	1.3	RHS

From: Fort Wayne, IN I-469 Exit 21				
	E	US-24	24	X 13
R			LAFARGE	
	S	US-127	2.7	Sign
R			Gate 4	
	W	Rd-176	1.3	RHS



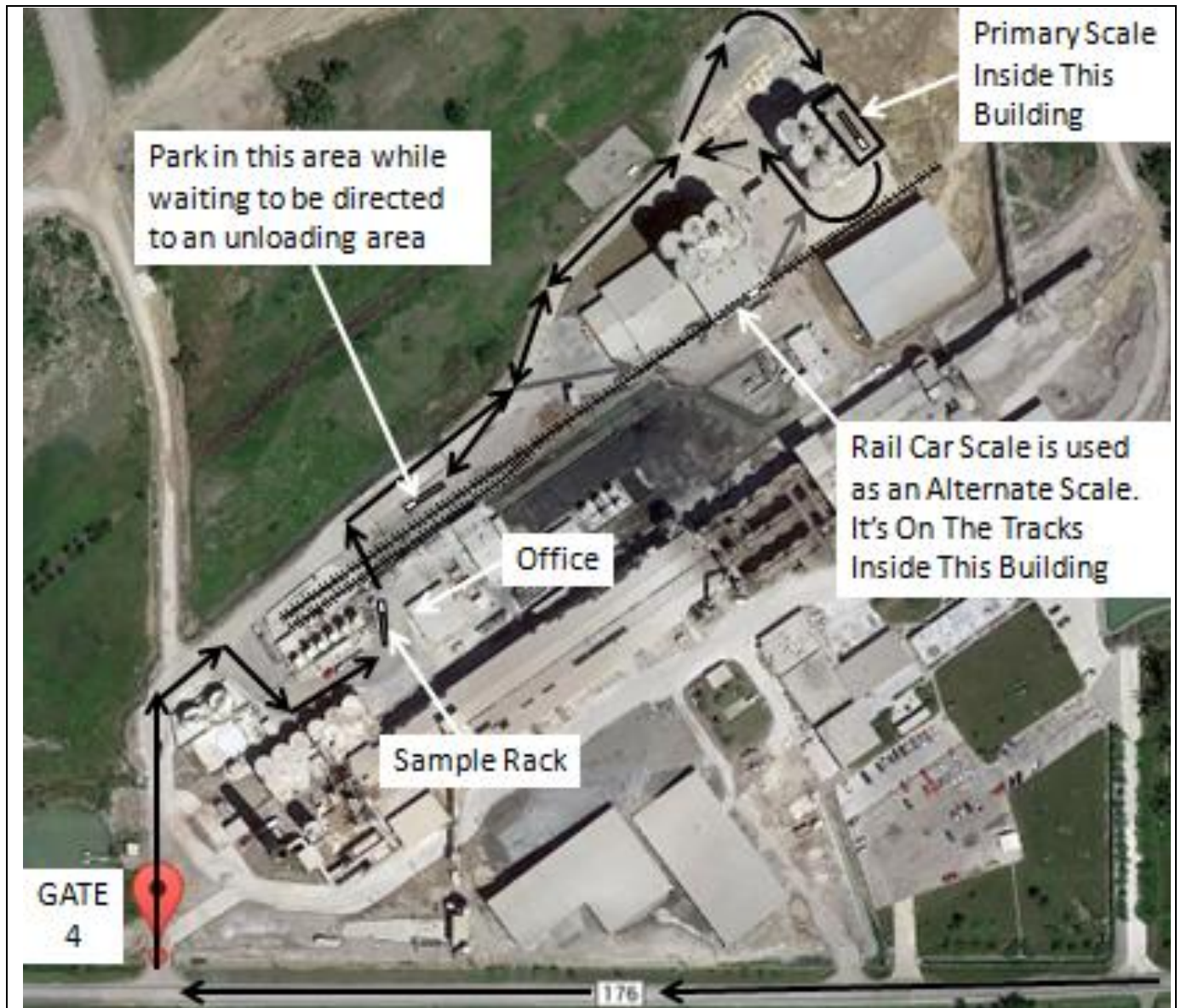
Most US routes in OH are good for truck traffic. I've taken I-75 to both US-30 and US-33 to get to US-127. There are a couple of small towns, but I would recommend using them. I've never taken I-75 to US-224 nor I-80 / I-90 to OH-15, but If coming from those directions, I would try them.

Systech Environmental Corp

1139 Rt. 176

Paulding, OH, OH 45879

41.179526,-84.607479



1. Go Into Gate 4 and park under the sample rack. If someone is under the sample rack just park in line behind him. Turn in your paperwork as soon as you get stopped. The people who sample your load use your paperwork to decide what equipment to bring out to your truck. If another trucker comes in behind you and turns in his paperwork ahead of you, it may delay your sampling. The folks in the office will give you a piece of paper with a number on it.
2. After being sampled go to the scale. Each time you scale, the number needs to be visible to the scale master.
3. After scaling wait beside the tracks as shown above until someone comes and tells you where to go.



4. After getting unloaded, go scale out. Don't forget your paper with the number on it must be visible to the scale master.
5. After scaling out, drive around the outside of the building and walk into the scale house entrance to pick up your scale ticket. It will be on a clipboard hanging from a string. Your ticket is the one with the number you showed the scale master.
6. Take your number and scale ticket back to the office to finish your paperwork.